



MADISON

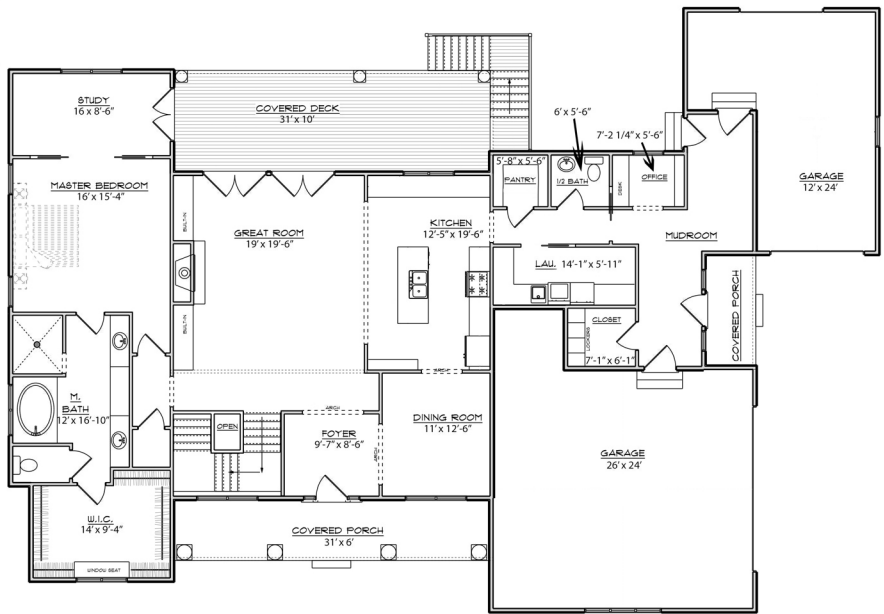
4,226 Sq. Ft.
Bedrooms | 4
Bathrooms | 3 full 1 half



WHERE QUALITY MATTERS!

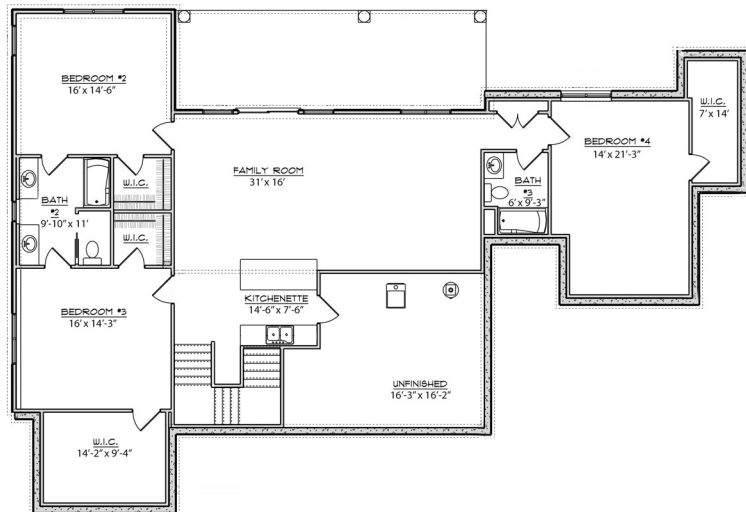
Dave Dusendang
CUSTOM HOMES

Front Elevation Design and Floor Plans are for illustration purposes only. All room sizes and elevation details may vary per buyer contract. The formal plan designed specifically for the buyer which includes the front elevation design and floor plans with actual designs is what the contract between the future homeowner and the builder is based on. This design is the sole property of Dave Dusendang Custom Homes and may not be copied without written permission.



MAIN FLOOR PLAN

1/4" = 1'-0" 2260 SQ. FT.



FOUNDATION PLAN

1/4" = 1'-0" 1966 SQ. FT. FINISHED

Dusendang Custom Homes
www.davedusendanghomes.com
616.874.7085