



DEL MAR

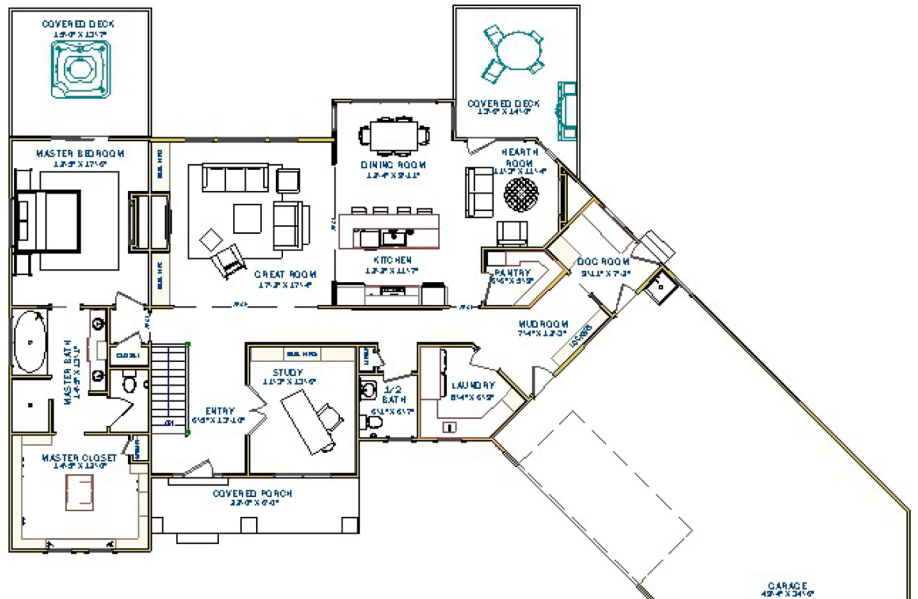
3,911 sf
 Bedrooms 3
 Bathrooms 2 full 1 half



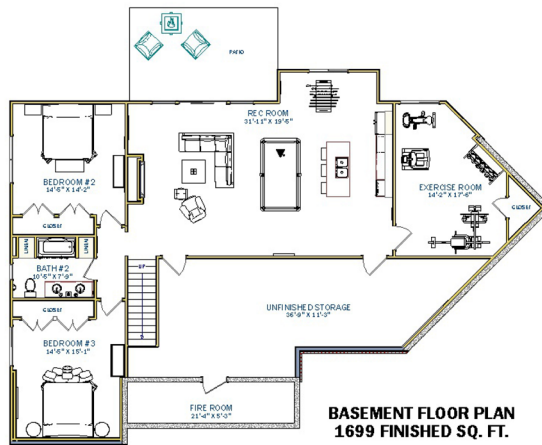
WHERE QUALITY MATTERS!

Dave Dusendang
 CUSTOM HOMES

Front Elevation Design and Floor Plans are for illustration purposes only. All room sizes and elevation details may vary per buyer contract, we will tailor it to fit your needs. The formal plan designed specifically for the buyer which includes the front elevation design and floor plans is what the contract between the future homeowner and the builder is based on. This design is the sole property of Dave Dusendang Custom Homes and may not be copied without written permission.



**MAIN FLOOR PLAN
 2278 SQ. FT.**



**BASEMENT FLOOR PLAN
 1699 FINISHED SQ. FT.**

Dave Dusendang Custom Homes
www.davedusendanghomes.com
 616.874.7085